

LMD-2341W / LMD-1541W

Professional LCD Monitor

SONY
make.believe



Inheriting the critical functions and performance of Sony's highly acclaimed LMD Series high-grade professional monitors – the LMD-51W Series – the outstanding new LMD-2341W (23-inch*¹) and LMD-1541W (15.3-inch*²) high-grade LCD video monitors are the latest enhancement to this series.

These monitors incorporate a lightweight, robust aluminium slim bezel and compact body, plus built-in standard SDI (3G/HD/SD), composite, and HDMI interfaces. They are specially designed to suit monitor-wall installation in studios and outside broadcast (OB) vans. Not only this, but these monitors are ideal for a variety of professional video and industrial image-monitoring applications when critical picture quality and professional features are required.

■ High-brightness LCD panel with wide viewing angle

The 23-inch full-HD (LMD-2341W, 1920 x 1080 pixels) and 15.3-inch (LMD-1541W, 1280 x 768 pixels) high-performance LCD panels reproduce lifelike images and stunning colours.

■ Space-saving compact design with a lightweight aluminium slim bezel and body

The LMD-2341W and LMD-1541W are designed specially to suit monitor-wall installation in studios and OB vans. The LMD-1541W is an ideal replacement for 14-inch CRT monitors.

■ ChromaTRU™ colour matching technology

ChromaTRU technology avoids colour mismatching between monitors, and makes the LMD-2341W and LMD-1541W ideal for efficient use in multi-monitor systems.

■ In-monitor Display (IMD) function for source monitoring

With an external remote function via Ethernet, image source names and tally information can be displayed on screen. *³

■ Built-in multi-signal input signal interfaces

Multiple interface connectors are provided as standard: SDI (3G/HD/SD-SDI) (two inputs/one output), analogue composite, and HDMI input.

*¹ 584.2 mm, viewing area measured diagonally.

*² 388.6 mm, viewing area measured diagonally.

*³ The LMD-2341W and LMD-1541W support the TSL system protocol.

Slim Bezel, Compact Design for Monitor-wall Installation

Incorporating a lightweight and robust aluminium slim bezel and compact body, the LMD-2341W and LMD-1541W are a highly appropriate solution for monitor-wall installation, both in studio sub-control rooms and OB vans.



Easy-to-use Control Panel

A rotary-type switch and seven function-assignable buttons allow users speedy and intuitive operation. Operation buttons with LED indicators enable error-free operation, even in dark environments.* The control panel of the LMD-2341W can be covered with a supplied control panel cover to simplify its appearance on a monitor wall.

* LED lights can be switched on/off.



Control panel with LED lights-on



The LMD-2341W with a control panel cover

In-monitor Display (IMD) Function

The LMD-2341W and LMD-1541W support the TSL UMD protocol and can display on screen two tally lamps and dynamic text information received via Ethernet. Up to 16 unicode characters*¹ can be displayed. IMD text can be positioned at the top or bottom of the screen. Both the text colour and the tally lamp colour are separately selectable either in a commanded colour or in one of eight preinstalled colours.*²

*¹ English alphabets, numbers, symbolic codes, and Japanese letters.

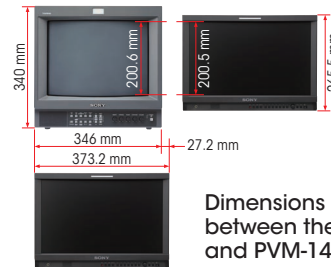
*² White, red, green, blue, yellow, cyan, magenta, and amber.



In-monitor display (IMD) image

Ideal for CRT Monitor Replacement

The LMD-1541W and the PVM-14L2, Sony's most popular 14-inch 4:3 aspect CRT monitor, share almost the same viewable area height. The body of the LMD-1541W – which houses a 15.3-inch diagonal, 15:9 aspect screen – is 74.5 mm shorter in height and only 27.2 mm wider than the PVM-14L2 body. And with its space-saving design, the LMD-1541W can be installed effectively in small spaces.



Dimensions comparison between the LMD-1541W and PVM-14L2

Desk-top Editing and Office Viewing

By installing an optional monitor stand*, the LMD-2341W and LMD-1541W can be used as desk-top monitors both for editing and office viewing.

* The optional SU-561 stand can be used for both monitors, and the optional SU-562 stand is for the LMD-1541W only.



LMD-2341W with SU-561*



LMD-1541W with SU-562*

* Simulated images

* Monitor stands are optional

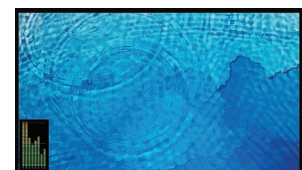
Waveform Monitor, Audio Level Meter*, and Time Code Display

The input signal's waveform with a 2-channel audio level meter can be displayed on screen. When an SDI interface is connected, the embedded audio level can be displayed on screen with an 8-channel audio level meter. A time code superimposed on SDI signals can be displayed on screen. Users can select either LTC or VITC.

* The Audio Level Meter function works only when receiving SDI-embedded audio signals.



The waveform monitor, 2-channel audio level meter, and time code display*



The 8-channel audio level meter*

* Simulated images

External Remote Control Function

The LMD-2341W and LMD-1541W have an external remote control capability for input/output signal selection and adjustment of various items via Ethernet (10BASE-T/100BASE-TX) connection. Up to 32 monitors and up to four control units can be connected via Ethernet connection and controlled remotely on the network. Also these monitors support some functions of the BKM-16R – an optional remote control unit for BVM-L/PVM-L Series monitors – such as the power on/off switch and the Input Select function.*

* The LMD-2341W and LMD-1541W do not support all BKM-16R functions.

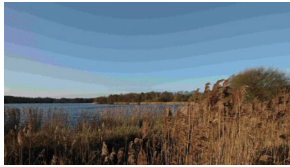
Superb Picture Performance and Colour Consistency



The LMD-2341W (23-inch) full-HD resolution (1920 x 1080 pixels) and LMD-1541W (15.3-inch) WXGA resolution (1280 x 768 pixels) high-performance LCD panels reproduce lifelike precise images and accurate colour.

Incorporating an IPS panel, the LMD-2341W and LMD-1541W both offer a wide viewing angle.

A combination of Sony's unique ChromaTRU colour matching technology and 10-bit signal processing delivers a stunning smooth grey scale, emulating the colours and gammas of broadcast-standard CRT monitors. Users can select the required colour space within this gamut. In addition, ChromaTRU technology provides these monitors with colour consistency in a multi-monitor system, and offers the best solution for a monitor-wall installation.



8-bit (256-levels) image*



10-bit (1024-levels) image*

* Simulated images

Furthermore, the Auto White Balance Calibration function ensures simple adjustment of each monitor's white balance. This function works with the combination of a PC and a commercially available calibration tool (X-Rite i1Pro series).



A Variety of Marker Settings

LMD-2341W and LMD-1541W monitors can display a center marker, aspect markers, and safety zone markers.



4:3 aspect marker image



16:9 aspect marker image

Scan Mode Selection

Scan size can be selected from normal scan (0%), over scan (5%), full scan, and native scan modes.* The aspect ratio can be switched between 16:9 and 4:3 according to the input signal. As a new function of the LMD-1541W, when a 1920 x 1080i or 1080p signal is input, the image frame of native scan can be shifted in five patterns: center, top-left, top-right, bottom-right, and bottom-left.

* Full Scan and Native Scan modes work on specific signal formats.



1920 x 1080 signal

Display in NATIVE scan mode



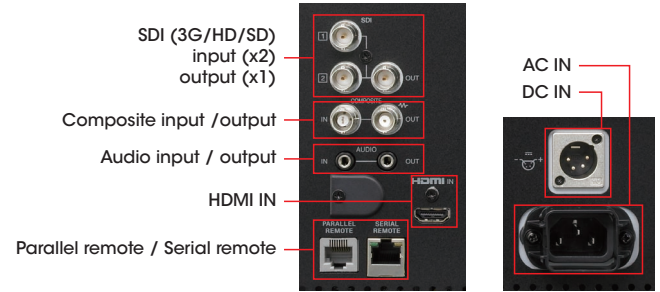
1280 x 768 resolution



An LMD-1541W native scan framing image

Input Versatility

The LMD-2341W and LMD-1541W are equipped with built-in standard input interfaces: two SDI (3G/HD/SD-SDI), one composite, and one HDMI input.



SDI (3G/HD/SD) input (x2) output (x1)

Composite input / output

Audio input / output

HDMI IN

Parallel remote / Serial remote

AC IN

DC IN

The LMD-2341W and LMD-1541W connector panel

Video input signal formats

System	Composite	SD/HD	3G	HDMI
575/50 (PAL)	○	○	-	○
480/60 (NTSC)*3	○	○	-	○
576/50p	-	-	-	○
480/60p*3	-	-	-	○
640 x 480/60p*3	-	-	-	○
1080/24PsF*1*3	-	○	-	-
1080/25PsF*2	-	○	-	-
1080/24p*3	-	○	-	○
1080/25p	-	○	-	○
1080/30p*3	-	○	-	○
1080/50i	-	○	-	○
1080/60i*3	-	○	-	○
720/50p	-	○	-	○*4
720/60p*3	-	○	-	○*4
1080/50p*5	-	-	○	○*4
1080/60p*3*5	-	-	○	○*4

*1 The format on the screen is displayed as 1080/48i.

*2 The format on the screen is displayed as 1080/50i.

*3 The frame rate is also compatible with 1/1.001.

*4 Available when a DVI signal is input with a DVI conversion cable connected to the HDMI IN connector.

*5 10-bit 4:2:2 Y/Cb/Cr is supported.

DVI-D input signal formats

Resolution	Dot clock (MHz)	fH (kHz)	fV (Hz)
640 x 480	25.175	31.5	60
1280 x 768	68.250	47.4	
1280 x 1024	108.000	64.0	
1360 x 768	85.500	47.7	
1440 x 900	88.750	55.5	
1680 x 1050	119.000	64.7	

* A DVI conversion cable is required.

* The sides of the displayed picture may be hidden depending on the input signal.

Other Features

- Key Inhibit function
- I/P mode selection
- H/V Delay function
- Blue Only mode
- Auto chroma/phase setup
- Power-saving function
- DC operation
 - LMD-2341W: 24 V
 - LMD-1541W: 12 V
- VESA standard mounting (100 x 100 mm pitch)
- EIA 19" standard rack mount with the optional MB-534 mounting bracket (LMD-1541W only)

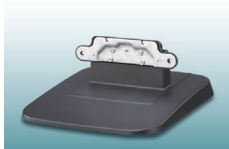
Specifications

	LMD-2341W	LMD-1541W
Picture Performance		
Type	a-Si TFT Active Matrix LCD	
Resolution	1920 x 1080 pixels (Full HD)	1280 x 768 pixels (WXGA)
Effective picture size (H x W) (diagonal)	509.1 x 286.4 mm (20 1/8 x 11 3/8 inches) 584.2 mm (23 inches)	334.1 x 200.5 mm (13 1/4 x 8 inches) 388.6 mm (15 3/8 inches)
Aspect	16:9	15:9
Colours	Approx. 16.7 million colours	
Viewing angle	89°/89°/89°/89° (typical) (up/down/left/right contrast>10:1)	
Input		
Composite	BNC (x1), 1.0 Vp-p ±3dB sync negative	
SDI	BNC (x2)	
HDMI	HDMI (x1)	
Audio	Stereo mini jack (x1), -5 dBu 47 kilohms or higher	
Parallel remote	Modular connector 8-pin (x1) (pin-assignable)	
Serial remote	RJ-45 modular connector (Ethernet) (x1) (10BASE-T/100BASE-TX)	
DC in	DC 24 V (output impedance 0.05 ohms or less)	DC 12 V (output impedance 0.05 ohms or less)
Output		
Composite	BNC (x1), Loop-through, with 75 ohms automatic termination	
SDI	BNC (x1), Output signal amplitude: 800 mVp-p ±10% Output impedance: 75 ohms unbalanced	
Audio monitor out	Stereo mini jack (x1)	
Speaker (built-in)	1.0 W (mono)	0.5 W (mono)
Headphones output	Stereo mini jack (x1)	
General		
Power requirements	AC 100 V to 240 V, 50/60 Hz, 0.8 A to 0.4 A, DC 24 V 2.4 A	AC 100 V to 240 V, 50/60 Hz, 0.8 A to 0.4 A, DC 12 V 3.4 A
Power consumption	Maximum approx. 70 W	Maximum approx. 50 W
Operating temperature	0°C to 35°C (32°F to 95°F), Recommended: 20°C to 30°C (68°F to 86°F)	
Operating humidity	30% to 85% (no condensation)	
Storage and transport temperature	-20°C to +60°C (-4°F to +140°F)	
Storage and transport humidity	0% to 90%	
Operating, storage and transport pressure	700 hPa to 1060 hPa	
Dimensions (W x H x D) (without stand)	549.5 x 352.5 x 100.3 mm (21 3/4 x 14 x 4 inches)	373.2 x 265.5 x 70.4 mm (14 3/4 x 10 1/2 x 2 7/8 inches)
Dimensions (W x H x D) (with optional stand SU-561)	549.5 x 467.4 x 269.9 mm (21 3/4 x 18 1/2 x 10 3/4 inches)	373.2 x 423.9 x 269.9 mm (14 3/4 x 16 3/4 x 10 3/4 inches)
Dimensions (with optional stand SU-562)	-	373.2 x 319 x 264.5 mm (14 3/4 x 12 5/8 x 10 1/2 inches)
Mass (without stand)	9.2 kg (20 lb 4.5 oz)	5.1 kg (11 lb 4.2 oz)
Mass (with optional stand SU-561)	11.3 kg (24 lb 15 oz)	7.2 kg (15 lb 14 oz)
Mass (with optional stand SU-562)	-	6.8 kg (14 lb 16 oz)
Accessories supplied	AC power cord (x1), AC plug holder (x1), Control panel cover (including 3 screws) (x1), Operating Instructions (x1), CD-ROM (x1), Using the CD-ROM Manual (x1)	AC power cord (x1), AC plug holder (x1), Operating Instructions (x1), CD-ROM (x1), Using the CD-ROM Manual (x1)

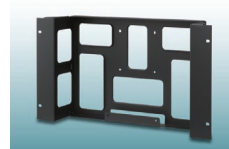
Optional Accessories



SU-561
Monitor Stand



SU-562
Monitor Stand
(for LMD-1541W only)



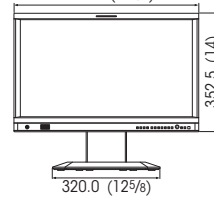
MB-534
Mounting bracket
(for LMD-1541W only)

Dimensions

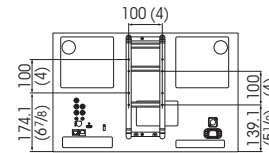
Unit: mm (inches)

LMD-2341W

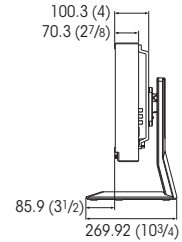
Front with optional SU-561
549.5 (21³/₄)



Rear

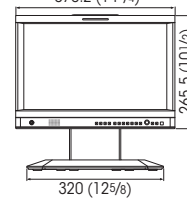


Side with optional SU-561

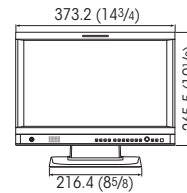


LMD-1541W

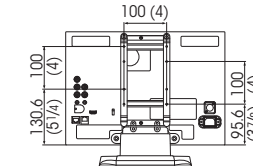
Front with optional SU-561
373.2 (14³/₄)



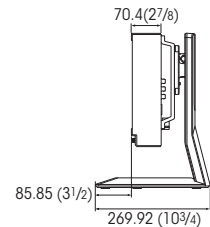
Front with optional SU-562



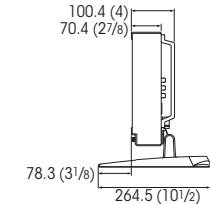
Rear with optional SU-562



Side with optional SU-561



Side with optional SU-562



Distributed by

©2010 Sony Corporation. All rights reserved.
Reproduction in whole or in part without written permission is prohibited.
Features and specifications are subject to change without notice.

Images on monitors are simulated.
The values for mass and dimension are approximate.
"SONY", "make.believe", and "ChromaTRU" are trademarks of Sony Corporation.

All other trademarks are the property of their respective owners.